

## Specifications

Type	125cc	
Part number	14571365	
Displacement	125	cc/rev
Port configuration	2 rear	
Shaft DIN 5462	8*32*36	mm
Inlet - straight internal thread	1 ¼"	BSP
Outlet - straight internal thread	1 ¼"	BSP
Recommended suction hose diameter	2"	inch
Torque at 250bar	515	Nm
p2 : Max. pressure for tipping application	250	bar
p3 : Max. continuous pressure	230	bar
p1 : Max. peak pressure	255	bar
L : Length of pump	192	mm
W : Width before ports	140.5	mm
W1 : Width of pump	148	mm
H : Height pump	160.9	mm
A : Position rear port	34	mm
Mass	17.98	kg
Centre of gravity distance (COG)	96.7	mm

Type	125cc	
Max. Torque	600	Nm
Flow at 2000 rpm	225	l/min
Max. speed at intermittent pressure*	2000	rpm
Min. speed at intermittent pressure	300	rpm
Oil temperature range	min / max -40 / 80	°C
Inlet pressure range (suction side)	min / max 0.7 / 3	bar
Recommended oil viscosity range	min / max 12 / 100	mm <sup>2</sup> /s
Max. starting viscosity**	750	mm <sup>2</sup> /s
Min. filtration	25	µm
Noise level at 1000 rpm and 100 bar	66	dB
Leak indicator included with the pump	Yes	
Gasket included with the pump	Yes	

\* Volumetric efficiency of 90%.

\*\* 2000 rpm for oil viscosity up to 100 cSt. 800 rpm for cold start (750 cSt).

## Technical notes

• Recommended oil is mineral based; for other fluids contact our engineering department • Mentioned filtration is for tipper applications only. • To avoid cavitation, suction hose must be kept as short and straight as possible and oil viscosity should be respected at all operating temperatures. • To avoid damaging the steel plugs when changing the port configuration, make sure to use hex key size 12 and the tool is fully inserted. • Painted black (RAL9005) • Leak indicator kit included and to be fitted with hose opening facing side or down.

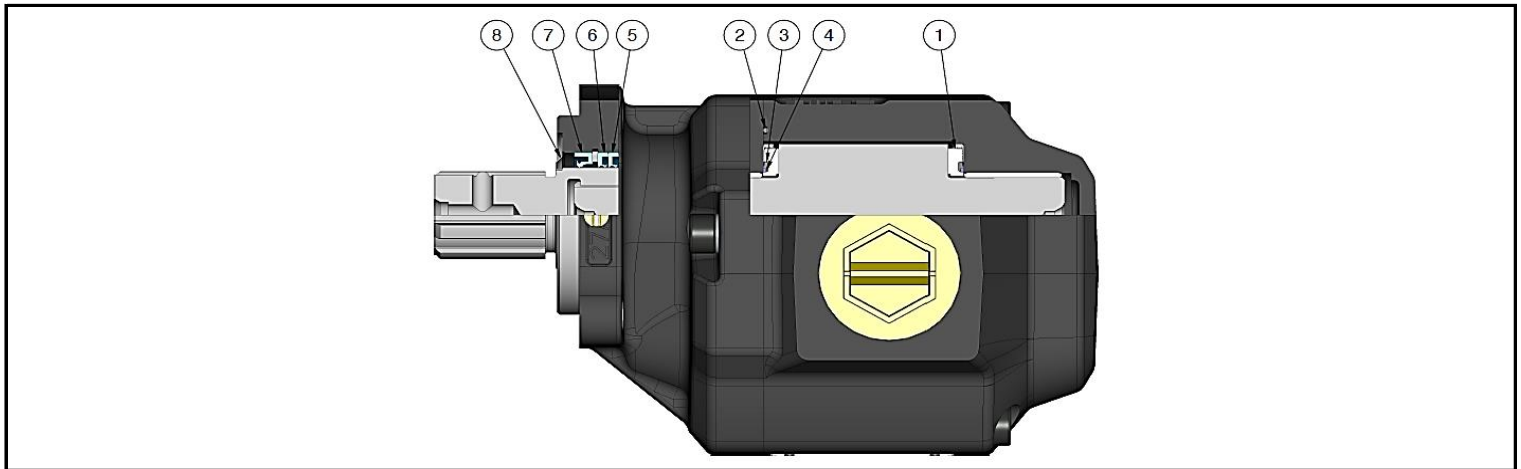
## Related documentation

Mounting instructions : PUM-0034

Repair instructions : PUM-0015

Oil specifications: OIL-0011

Spare parts

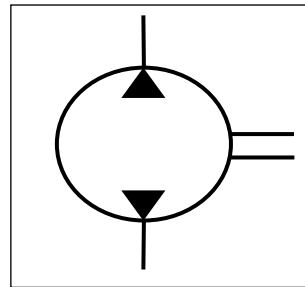


Spare parts

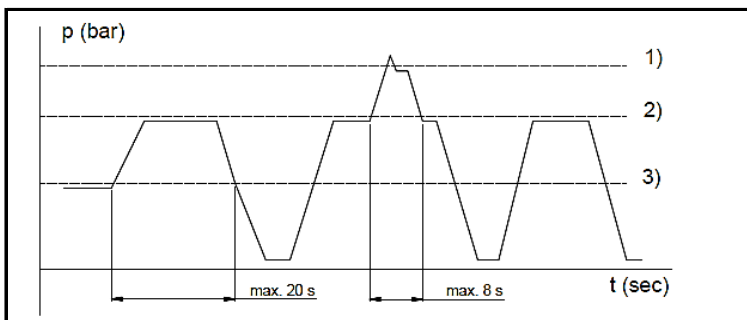
	Type	125cc
	Seal kit ( parts : 2, 3, 4, 5, 6, 7 & 8 )	02460016
1	Thrust plate	02259409
2	O-ring	see seal kit
3	Seal thrust plate	see seal kit
4	Back-up ring thrust plate	see seal kit
5	Shaft seal	see seal kit
6	Shaft seal	see seal kit
7	Shaft seal	see seal kit
8	Nilos ring	see seal kit
9	Leak indicator kit	02470180

\* Leak indicator included with the pump

Hydraulic symbol pump

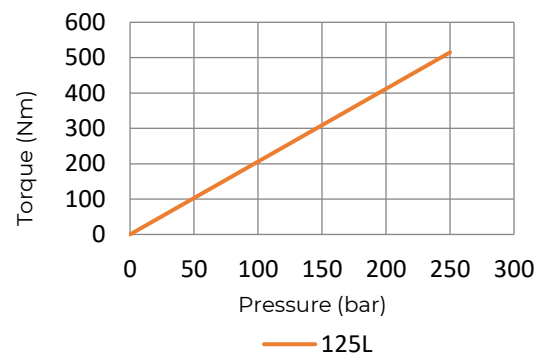


Pressure Definition



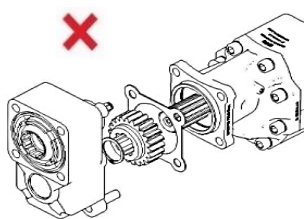
- p 1) Peak pressure
- p 2) Intermittent pressure e.g. tipping applications
- p 3) Continuous Pressure

Torque - Pressure characteristics

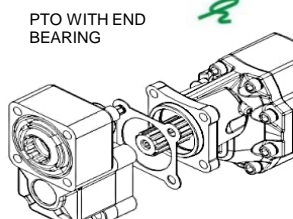


\* PTO output torque must be higher than the torque required by the pump

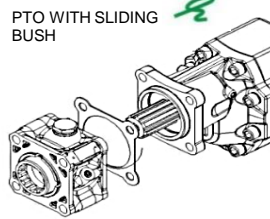
Mounting options



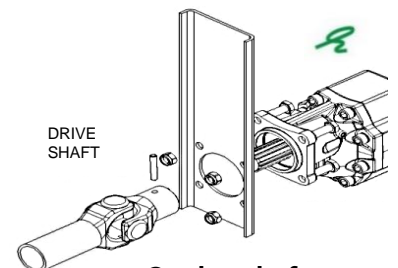
PTO loose gearwheel



PTO reinforced output



PTO reinforced output



Cardan shaft