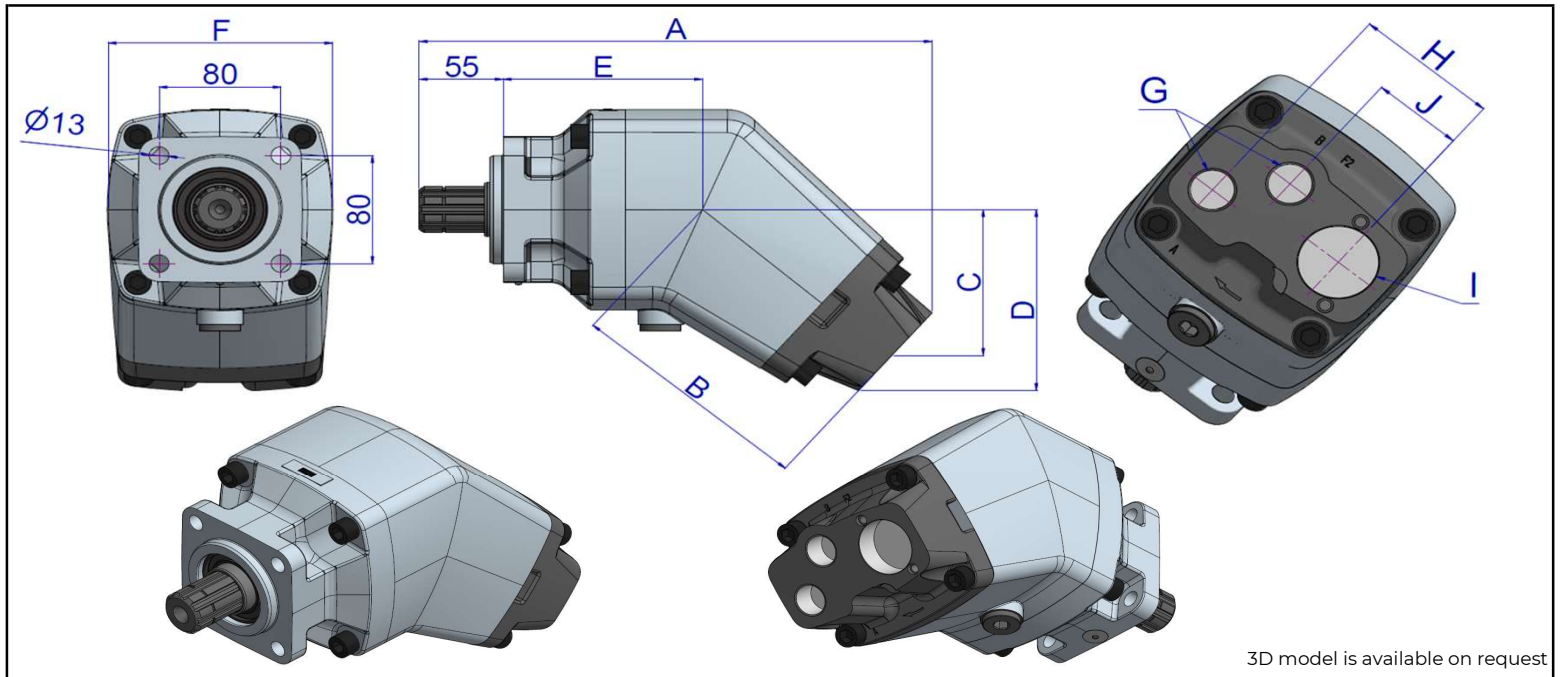


Piston pump F2-28/35/42/53/55/70-L/R-4H


3D model is available on request

Specifications

Type	055L/028L	070L/035L	042L/042L	053L/053L	070L/070L	
Part number (Right rotation)	14535244	14535270	14535240	14535250	14535243	
Part number (Left rotation)	14535245	14535271	14535241	14535251	14535242	
Displacement. (Port A / Port B)	55 / 28	69 / 36	43 / 41	54 / 52	68 / 68	cc/rev
Shaft dimension DIN 5462	8*32*36	8*32*36	8*32*36	8*32*36	8*32*36	mm
Inlet Ports ("I")	Suction fitting to be ordered separately					
Outlet Ports ("G")	3/4"	3/4"	3/4"	3/4"	3/4"	BSP
Recommended suction hose diameter	2 1/2"	2 1/2"	2 1/2"	2 1/2"	3"	inch
Max. Peak pressure "P1"	400	400	400	400	350	bar
Max. Continuous pressure "P3"	350	350	350	350	300	bar
Mass	19	19	19	19	19	kg
Overhang torque	23	23	23	23	23	Nm
"A"	332	332	332	332	332	mm
"B"	169	169	169	169	169	mm
"C"	109	109	109	109	109	mm
"D"	139	139	139	139	139	mm
"E"	127	127	127	127	127	mm
"F"	148	148	148	148	148	mm
"H"	81	81	81	81	81	mm
"J"	51	51	51	51	51	mm
Max. Torque at "P1"	533	666	538	673	765	Nm
Max flow at 1800 RPM (Port A / Port B)	99 / 52	124 / 65	78 / 75	97 / 94	126 / 122	l/min
Max. power	100	110	100	127	131	kW
Max. speed Port A and B pressurized*	1800	1800	1800	1800	1650	rpm
Max. speed Port B pressurized*	2100	2100	2100	2100	2100	rpm
Oil temperature range	min / max -30 / 75	min / max -30 / 75	min / max -30 / 75	min / max -30 / 75	min / max -30 / 75	°C
Recommended oil viscosity	min / max 20 / 30	min / max 20 / 30	min / max 20 / 30	min / max 20 / 30	min / max 20 / 30	cSt
Operating viscosity	min / max 10 / 400	min / max 10 / 400	min / max 10 / 400	min / max 10 / 400	min / max 10 / 400	cSt
Max. starting viscosity**	1000	1000	1000	1000	1000	cSt
Recommended filtration - ISO (201813)	10	10	10	10	10	µm
Leak indicator included with the pump	Yes	Yes	Yes	Yes	Yes	

*Max speed can only be used if correct suction line dimensions are used. During unloading conditions the max speed of the pump is 2250 RPM.

** Max speed is 1200 RPM at a viscosity of 1000cSt.

Note : The pump does not include suction fitting. Please refer page 3 for suction fittings. .
 Peak pressure max. 5 sec/min.

Technical Notes

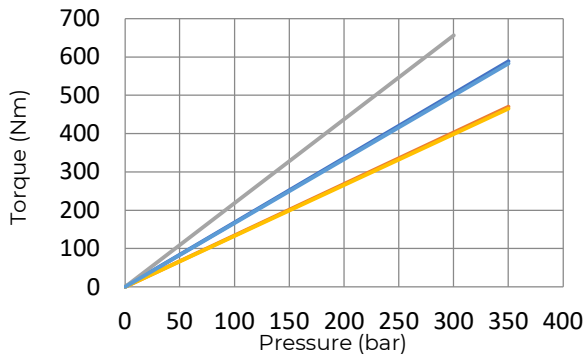
- Recommended oil is mineral based
- For other fluids contact our engineering department
- To avoid cavitation, suction hose must be kept as short and straight as possible and oil viscosity should be respected at all operating temperatures.
- The minimum oil level in the oil tank must be above the inlet of the pump.
- Follow proper mounting instructions for prolonged bearing life.
- If any oil should drop out the indication-hole stop the system immediately.

Related documentation

Mounting instructions: PUM-0030

Oil specifications: OIL-0011

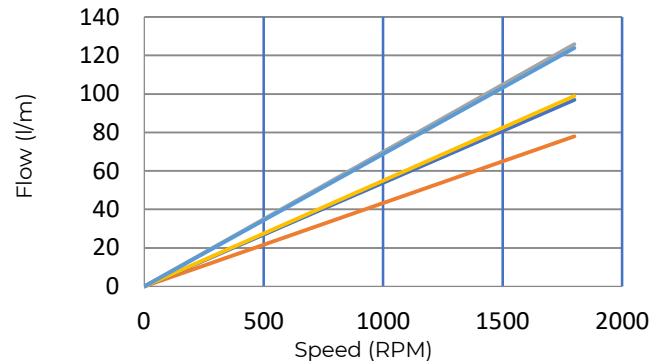
Torque - Pressure characteristics



— 42L/42L — 53L/53L — 70L/70L
 — 55L/28L — 70L/35L

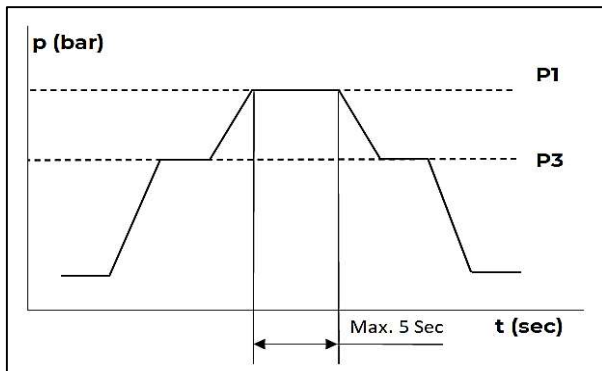
* PTO output torque must be higher than the torque required by the pump.

Flow - Speed characteristics for Port A



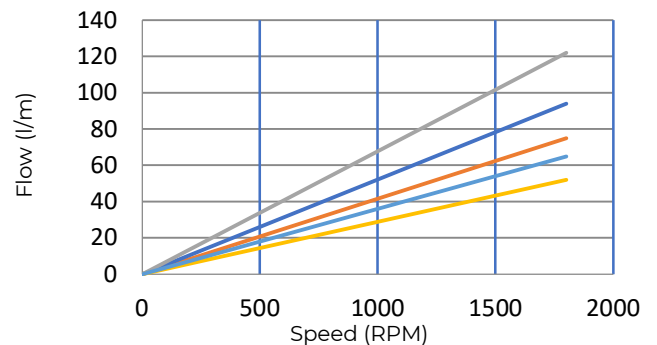
— 42L/42L — 53L/53L — 70L/70L
 — 55L/28L — 70L/35L

Pressure definition



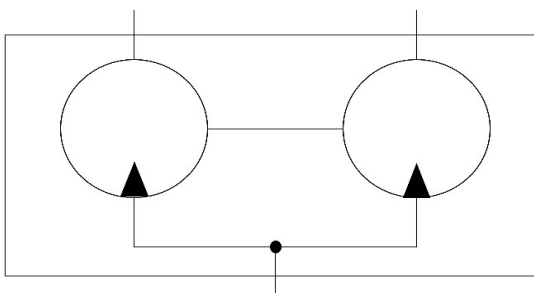
p 1) Continuous Pressure
 p 3) Continuous Pressure

Flow - Speed characteristics for Port B

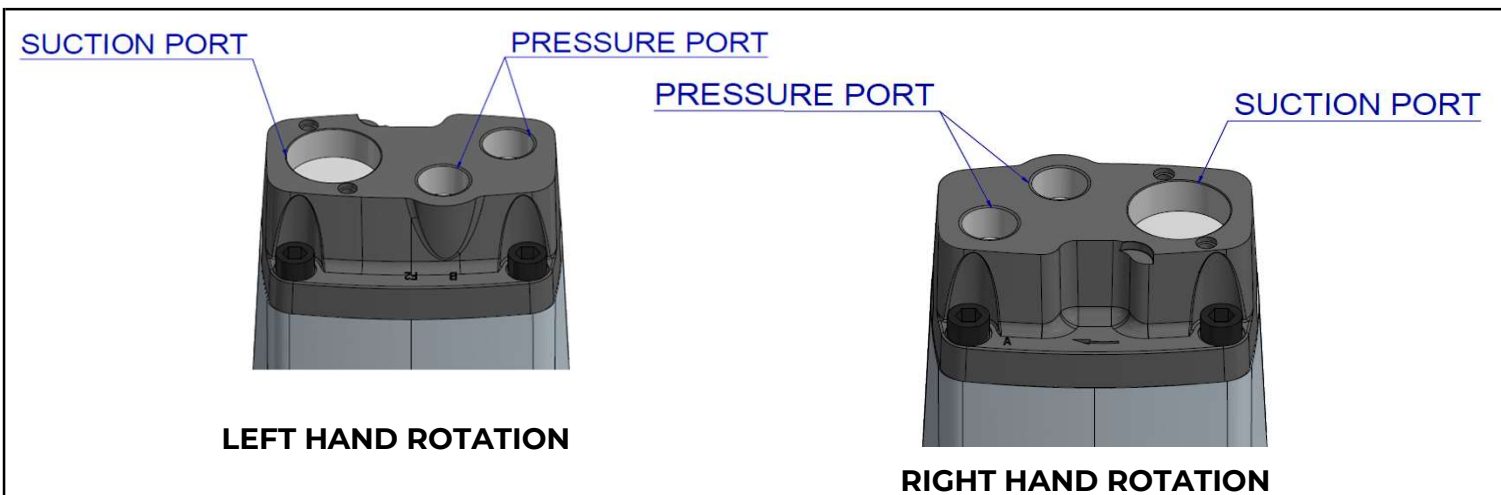


— 42L/42L — 53L/53L — 70L/70L
 — 55L/28L — 70L/35L

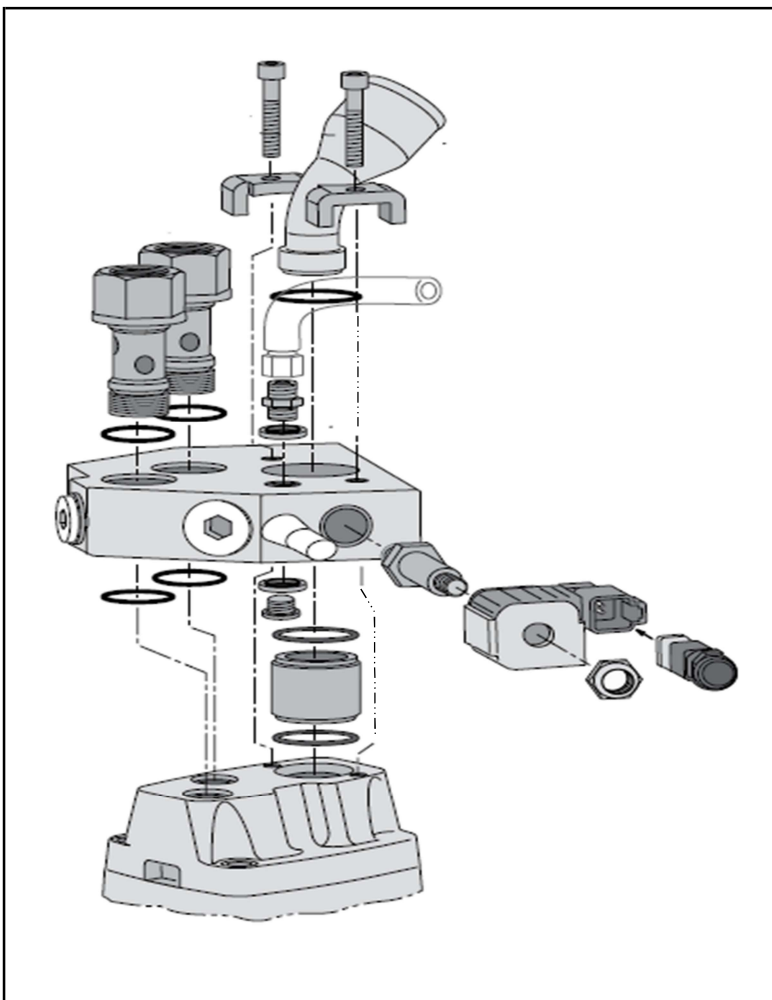
Hydraulic symbol



Mounting Options



Bypass valves



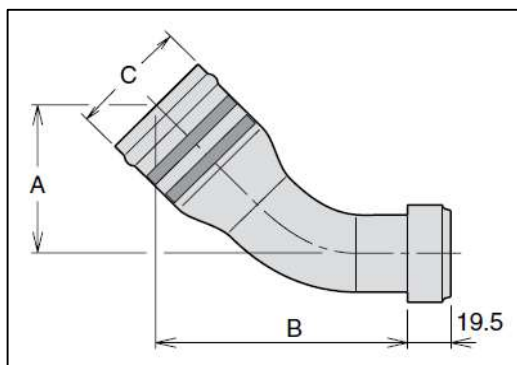
Without manual override

Part no.	Description
14535396	BYPASS VALVE F2 - 12V TWIN FLOW
14535390	BYPASS VALVE F2 - 24V TWIN FLOW

With manual override

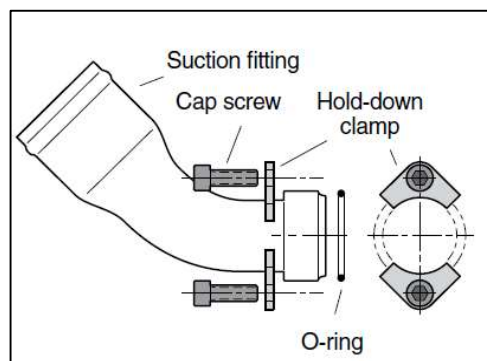
Part no.	Description
14535392	BYPASS VALVE M.O. F2 - 24V TWIN FLOW

Suction fitting



Part no.	A mm	B mm	ØC mm (in)
14535305	67	110	50 (2")
14535306	75	117	63 (2 1/2")
14786607	95	138	75 (3")

Note : We advise on using large hose diameter.



Note : Suction fitting must be ordered separately as it is not included with pump.

The clamps, O-ring and the screw are included with the fitting.

Spare parts

Part no.	Description
02410027	SEAL KIT PISTON PUMP PARKER F2
14535026	END CAP ASSY F2 - 70/70 - L
14535411	END CAP ASSY F2 - 53/28 - R
32020813	END CAP ASSY F2 - 70/35 - R
32020824	END CAP ASSY F2 - 53/53 - R
32020827	END CAP ASSY F2 - 42/42 - R
32020828	END CAP ASSY F2 - 53/53 - L
32020836	END CAP ASSY F2 - 42/42 - L
32020837	END CAP ASSY F2 - 53/28 - L
32020838	END CAP ASSY F2 - 70/35 - L
32020839	END CAP ASSY F2 - 70/70 - R

Seal kit

Part no.	Description	Qty
02410027	O-Ring	01
	Gasket	01
	Shaft seal	01
	Protective washer	01

End cap assembly

Description	Qty
End cap	01
Hex Socket Screw	04